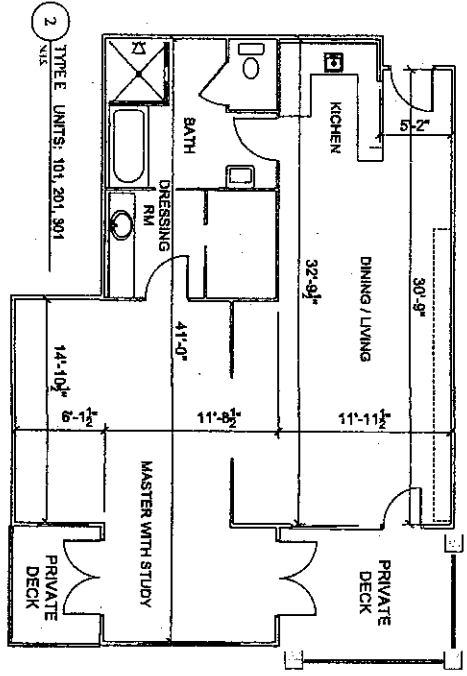


1 TYPE D UNITS: 102, 202, 302

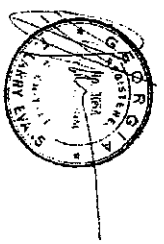


2 TYPE E UNITS: 101, 201, 301

11'-0" x 8'-0" HEATED
 PRIVATE DECK
 NOTE: ABOVE
 CONDIMINIUM PLAN TO
 MATCH ORIENTATION
 FROM PLAN

11'-0" x 8'-0" HEATED
 PRIVATE DECK
 NOTE: ABOVE
 CONDIMINIUM PLAN TO
 MATCH ORIENTATION
 FROM PLAN

NOTE:
 DIMENSIONS THIS SHEET
 TO BE VERIFIED BY
 HORIZONTAL SURVEY

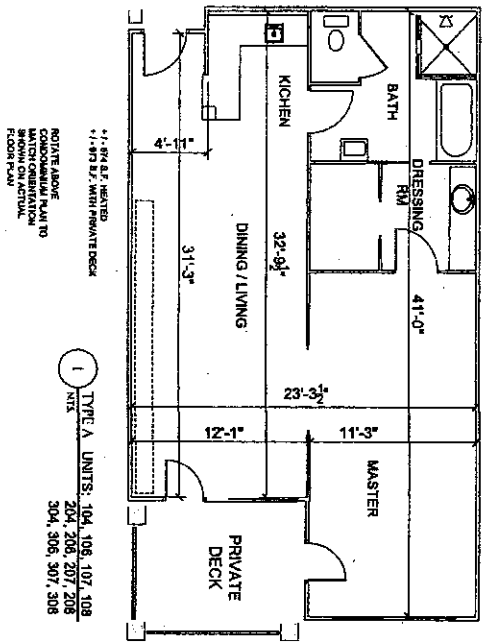


SEA GATE INN CONDOMINIUMS
 BEACHVIEW DRIVE AT 2ND STREET
 ST. SIMONS ISLAND
 CLYNN COUNTY, GEORGIA



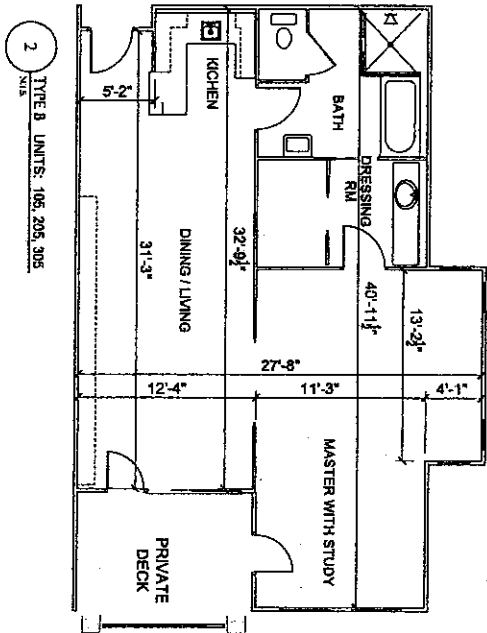
F. LARRY EVANS, ARCHITECT

TYPICAL UNIT TYPES



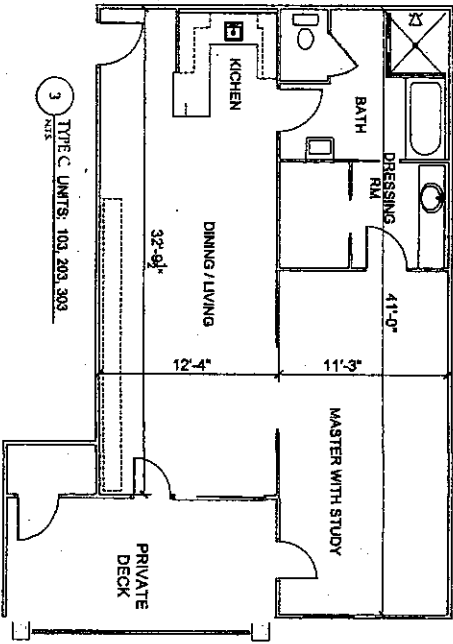
NOTE ABOVE
CONDOMINIUM FLOOR PLAN TO
MATCH OBSERVATION
SHOWN ON ACTUAL
FLOOR PLAN

1 TYPE A UNITS: 104, 106, 107, 108
204, 206, 207, 208
304, 306, 307, 308



NOTE ABOVE
CONDOMINIUM FLOOR PLAN TO
MATCH OBSERVATION
SHOWN ON ACTUAL
FLOOR PLAN

2 TYPE B UNITS: 105, 205, 305



NOTE ABOVE
CONDOMINIUM FLOOR PLAN TO
MATCH OBSERVATION
SHOWN ON ACTUAL
FLOOR PLAN

3 TYPE C UNITS: 103, 203, 303

NOTE:
DIMENSIONS THIS SHEET
TO BE VERIFIED BY
HORIZONTAL SURVEY



SEA, CATE INN CONDOMINIUMS
BEACHVIEW DRIVE AT 2ND STREET
ST. SIMONS ISLAND
CLYNN COUNTY, GEORGIA



F. LARRY EVANS, ARCHITECT

TYPICAL UNIT TYPES